

P-330W 與 Intel PROSet 無線連結

步驟一：請先確認或變更您的基地台名稱(SSID)。



The screenshot shows the ZyXEL P-330W web interface for wireless network basic settings. The left sidebar contains a navigation menu with '無線網路' (Wireless Network) selected. The main content area is titled '無線網路基本設定' (Wireless Network Basic Settings). Below the title is a description: '本頁面是用來設定一些參數，讓無線用戶端能夠連接到基地台，在此您能夠更改無線加密及無線網路參數的設定。' (This page is used to set some parameters to allow wireless clients to connect to the base station, and here you can change wireless encryption and wireless network parameter settings.) The settings include: '關閉基地台' (Disable Base Station) checkbox, '頻帶' (Channel) set to '2.4 GHz (B+G)', '模式' (Mode) set to 'AP', '網路型態' (Network Type) set to 'Infrastructure', 'SSID' set to '330W', and '頻道' (Channel) set to '11'. There is a '已連結的用戶端' (Connected Clients) section with a '顯示作用中用戶端' (Show Active Clients) button. A '存檔' (Save) button is located at the bottom right.

步驟二：請設定您無線加密的方式與金鑰。



The screenshot shows the ZyXEL P-330W web interface for wireless network WEP key settings. The page is titled '無線網路WEP金鑰設定' (Wireless Network WEP Key Settings). Below the title is a description: '本頁面讓您可以設定WEP金鑰值，您可以使用64-bit或128-bit做為加密金鑰，或是輸入Passphrase值(ASCII 或 Hex 格式)，以及按下「產生WEP金鑰」鈕來自動產生WEP金鑰。' (This page allows you to set WEP key values, you can use 64-bit or 128-bit as encryption keys, or input a Passphrase value (ASCII or Hex format), and press the 'Generate WEP Key' button to automatically generate WEP keys.) The settings include: '金鑰長度' (Key Length) set to '64-bit', '金鑰格式' (Key Format) set to 'ASCII (5 characters)', '預設Tx金鑰' (Default Tx Key) set to '加密金鑰 1' (Encryption Key 1), '加密金鑰 1' (Encryption Key 1) set to '12345', '加密金鑰 2' (Encryption Key 2), '加密金鑰 3' (Encryption Key 3), '加密金鑰 4' (Encryption Key 4), and 'Passphrase'. There is a '產生WEP金鑰' (Generate WEP Key) button. At the bottom, there are '存檔' (Save), '關閉' (Close), and '重設' (Reset) buttons.

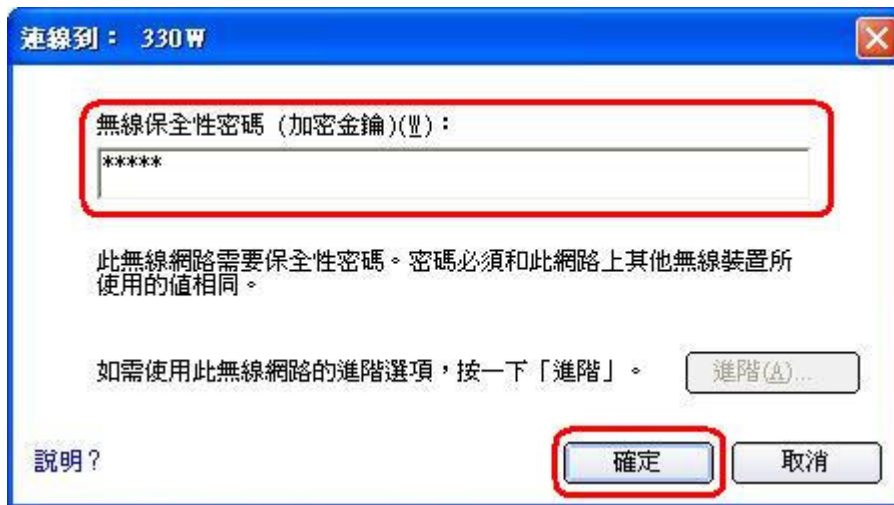
步驟三：請開啟 Intel PROSet 無線軟體，按”重新整理”，搜尋偵測到的基地台。



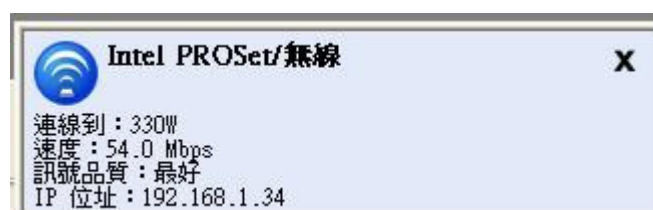
步驟四：於清單中選取您欲連線的基地台名稱，並按下”連線”。



步驟五：此時會跳出畫框詢問金鑰密碼，請輸入您的金鑰密碼。



步驟六：若金鑰密碼正確，於取得 IP 位址後，會秀出連線資訊。



步驟七：若依照以上步驟，您未能成功連線，請您先將設定記錄檔清空後，再重新連線基地台一次。

